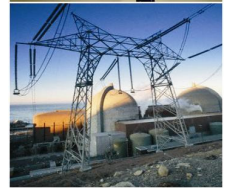


DFC9300 Super High Density 19" x 3U Chassis



DESCRIPTION

The DFO9300 Series are 19"L x 5.25"H(3U), Super High Density Chassis that accommodate Dante Security fiber optic Digital Series of Transmitters, Receivers and Transceiver cards. Designed with Aluminum extrusions and reversible mounting ears, units provide up to 18 slots for single width cards or 9 double width. Units feature dual power supplies as standard. For ease of installation and upgrade, cards are front loaded – optical and electrical connectors are all on front panel. Available with 100-240VAC, the DFO9300 Series are a perfect solution for commercial and industrial video surveillance installations.



FEATURES

- * 19"L x 5.25"H(3U) Subrack Frame and PSU
- * Highest Density in Surveillance Industry
- * 18 Single Card Slots and 2 Power Supplies
- * 9 Double Card Slots and 2 Power Supplies
- * Cards and PSU Power-on LED Status Indicators
- * Hot swappable Card Units
- * 100-240VAC, Auto Ranging PSU
- * Regulatory Compliance with CE, FCC, ROHS

APPLICATIONS

- * Homeland Security
- * Correctional Centers
- * Petrochemical Industry
- * Corporate and Banking
- * Casinos and Hospitality
- * Health Care Centers
- * Schools and Universities
- * Government and Military
- * Power Generating Plants
- * Traffic Surveillance (ITS)

ORDERING INFORMATION

DFO9300-2 19"L x 5.25"H(3U) Chassis, 18/9 Slots, 2 Power Supplies, 100/240VAC Auto Ranging

DFO9310 100-240VAC Power Supply Auto Ranging for DFO9300 Subrack

Electrical Parameters

Input Voltage: 100/240VAC
50/60Hz
Power Consumption: 80W
Output Voltage: +5V

General Parameters

Power on LEDs: Cards and PSU
Environmental Parameters
Operating Temperature: -10°C~+55°C

Operating Humidity: 0-95% non-condensing

Mechanical Parameters

Dimensions W x D x H: 19"(483mm),
11.8"(300mm),
5.25"(135mm)

Weight: 12 lbs(5.25Kg)
Regulatory Compliance: CE, FCC, ROHS
Manufactured to: ISO9001:2000 standards

